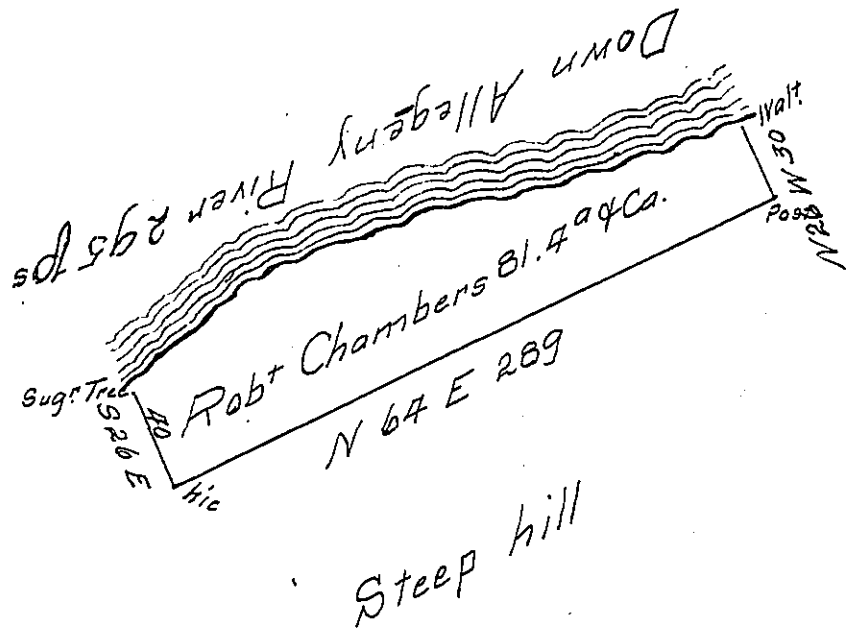


Courses & distances
down the River

S 70 W 68
S 82 W 38
S 70 W 122
S 45 W 67
295



Survey'd to Robert Chambers on the 28th day of October 1784, the above described Tract of eighty one acres & a quarter of an acre & allowance of six p Cent. Situate on the East side the Allegheny River about two miles above the mouth of Kiskaminates in Westmorland County By warrant of the 23^d day of August 1784

Joshua Elden D.S.

John Lukens Esq^r S. Genl

IN TESTIMONY that the above is a copy of the original remaining on file in the Department of Internal Affairs of Pennsylvania, made conformably to an Act of Assembly approved the 16th day of February, 1833, I have hereunto set my Hand and caused the Seal of said Department to be affixed at Harrisburg, this Twenty-fourth day of June 1908

Henry Fouda
Secretary of Internal Affairs.